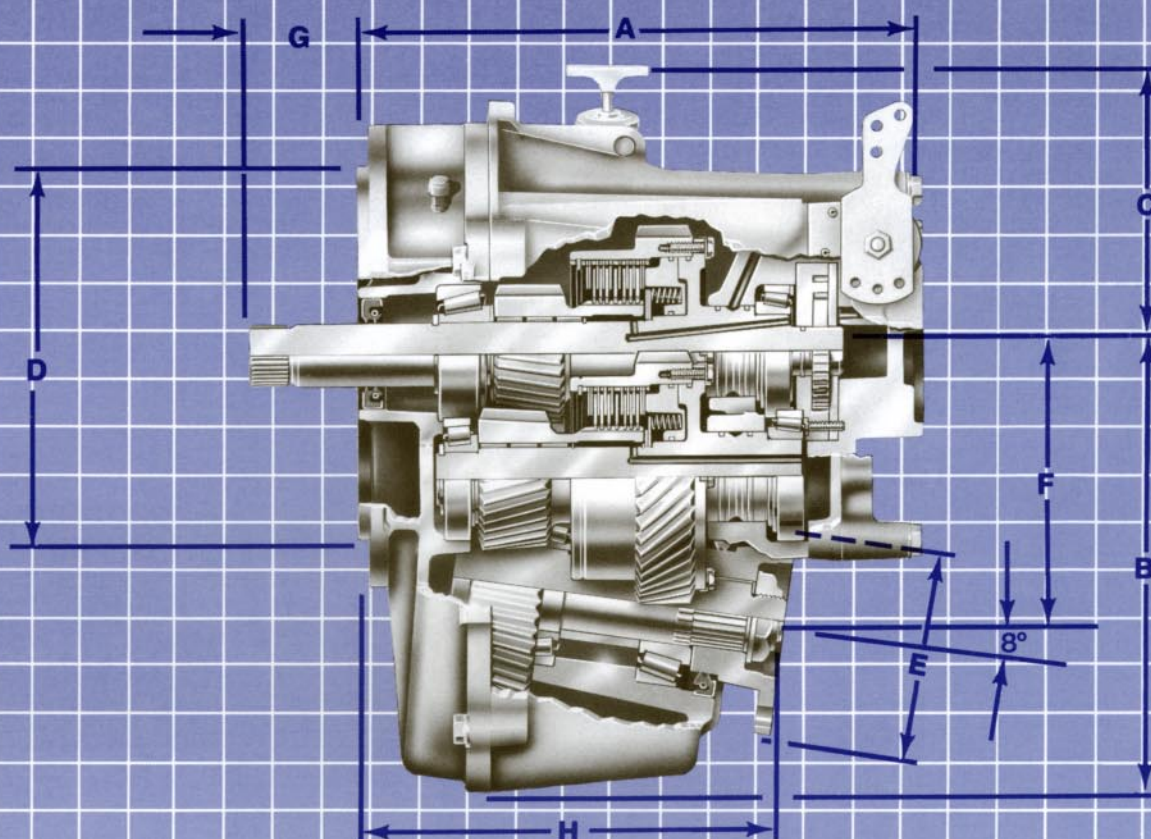


Specifications

The Series 5000 Down Angle transmission is specifically designed for twin engine applications that require nearly horizontal engine installation. Its full reversing feature eliminates the need for opposite rotating engines, while the 8 degree "down angle" eliminates the problems that result from extremely steep engine installation angle. An improved hydraulic system provides more engine torque to the propeller. New design features such as an hydraulic pump and

control valve make service easier. The control lever and dipstick are centrally located. Additionally, an optional SAE "A" auxiliary pump drive mounting is available on the rear of the Series 5000 transmission. Like all Velvet Drive® marine transmissions, the Series 5000 accepts standard damper assemblies, flywheel housing adapters and propeller shaft couplings.



Dimensions Inches (millimeters)

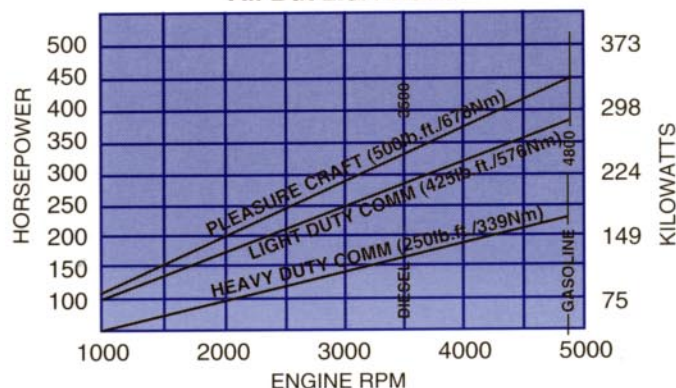
A	B	C	D	E	F	G	H
12.09 (307.0)	9.78 (248.5)	6.38 (162.0)	8.25 (209.5)	5.00 (127.0)	5.95 (151.2)	2.56 (65.0)	8.98 (228.1)

General Information (subject to change without notice)

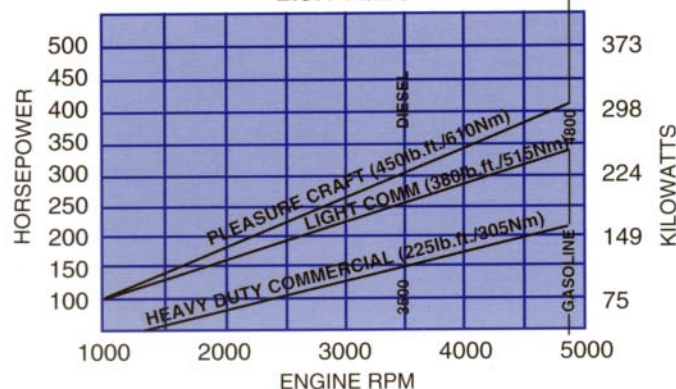
Available Ratios	1.05, 1.3, 1.6, 2.0, 2.45, 2.8:1
Both directions of output rotation	
Input Shaft Spline Teeth	26
Input Shaft Rotation	automotive
Output Shaft Rotation	either direction
Approximate Dry Weight	109 lbs. (49.4 kg)

Classifications/Ratings

Gasoline and Diesel Engines
All But 2.8:1 Ratio



Gasoline and Diesel Engines
2.8:1 Ratio



Service Classifications:

Pleasure craft: Full throttle used approximately 5% of total running time. Typical cruising is at 80% or less of maximum rated engine speed. Engine running time is 400 or less hours per year. Applications in boats designed as pleasure craft and used for commercial use, such as charter boats or party fishing boats, are considered light duty commercial applications.

Light duty commercial: Full throttle used approximately 5% of total running time. Longer running periods with throttle setting at 75% or less of maximum rated

engine speed. Engine running time is up to 1500 hours per year. Light duty commercial applications include sport fisherman boats, party fishing boats, crew boats, search & rescue boats, and patrol boats.

Heavy duty commercial: Full throttle used up to approximately 5% of total running time. Longer running periods up to 80% of maximum rated engine speed. Engine running time is up to 2500 hours per year. Heavy duty applications include towboats, heavy supply boats, ferries, and offshore fishing trawlers.

Important Notes:

System torsionals: System related noises or vibrations can occur at low engine speeds. They can cause gear rattle and result in damage to the boat engine as well as the transmission. Velvet Drive Transmissions, a Division of Regal-Beloit Corporation is not responsible for total system-related torsionals of this type.

Specifications: All specifications and descriptive data shown are nominal and subject to change without notice.

Lubrication: Dexron IIE, Dexron III, or any transmission

fluid which meets Detroit Diesel Allison C-4 specification are recommended for use in all Velvet Drive® transmissions. **Applications:** Matching of engine, transmission model, transmission ratio and propeller size is important. The combination must allow the engine to obtain maximum rated engine RPM. Specific applications should be referred to Velvet Drive® transmission distributors for assistance.